

### SPECIFICATION

#### 1. Mechanical:

- Pressure range: 0-±5000PSID
- Proof Pressure: 150% of rated range
- Pressure Media: Any compatible with alloy Inconel 718, solution annealed and aged to a hardness of HRC40±3
- Vented Reference Media: Any clean, non-corrosive, non-aqueous dielectric liquid or gas
- Line pressure: Up to 25000PSI

#### 2. Electrical:

- Excitation: 10VDC, nominal
- Bridge resistance: 1.5KΩ to 3.3KΩ
- Output at zero pressure: ±0.1mV/V
- Full scale sensitivity (F.S.S) : (4±1) mV/V
- Electrical Connections:
  - 1 Red= + Excitation, 2 Green= + Signal, 3 White=-Signal, 4 Black=-Excitation
  - 5,6 Blue=RTD(Pt1000)
- Insulation resistance: All conductors together to case, 500MΩ@100VDC and +25°C

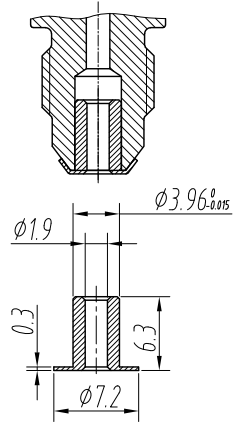
#### 3. Accuracy:

- Non-Linearity: 0.1%FSO (Best Fit Straight Line Method)
- Polynomial error: ±0.05%FSO
- Polynomial error referenced to following Polynomial Model built during calibration:  
 $P=P(V,T)=(a+bV+cT+dV^2+eT^2+fVT+gV^3+hT^3+iVT^2+jV^2T)$   
where P=Pressure(PSI), V=Transducer Output(mV), T=RTD(Ω)  
10 coefficients in above formula will be provided with every product individual.

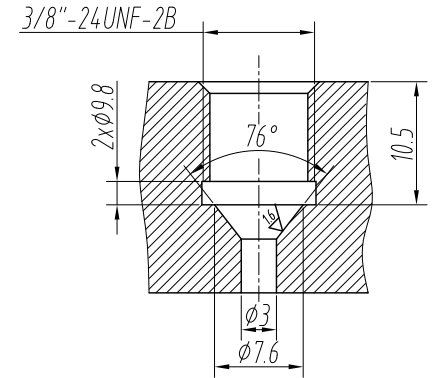
#### 4. Environmental:

- Working temperature range: -20°C to +205°C
- Thermo drift of zero: ±0.015%FSO Per °C
- Thermo drift of sensitivity: +0.025%FSO Per °C
- Error due to combined effect of shock, vibration and acceleration shall be less than 0.01% of FSO per g
- Vibration: 10g(RMS), 10Hz to 200Hz
- Shock: 500g@1mS, half-sine acceleration


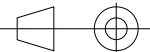
replaceable seal



Mounting port and sealing method:



Installation information:  
Material of the replaceable seal is Inconel 718(annealed);  
Recommended installation torque: 14 to 17Nm;  
One piece of seal is included with one sensor.

<div>UNLESS OTHERWISE SPECIFIED TOLERANCE UNLESS NOTED: X. ± 0.3 .X ± 0.2 .XX ± 0.1 ANGLES: ± 0.5°</div> <div>3.2/ FINISH ALL SURFACES DEBURR</div> <div>BREAK ALL SHARP EDGES CONCENTRICITY OF DIA'S WITH COMMON C.L. DIMENSIONS ARE IN MM UNLESS OTHERWISE SPECIFIED OTHER STANDARDS MAY APPLY</div>	BY		DATE		<div> Beijing HaiZhuoLiKang Technology Co., Ltd.</div>			
	DRAWN		2024/08/23		Differential Pressure Sensor			
	CHECKED							
	APPROVED							
	WEIGHT		28g		SIZE	DWG NO.	WETTED MATERIAL	REV.
FIRST ANGLE PROJECTION 				A4	XXX-XX-XX	Inconel 718	Init. Rel.	
				SCALE	DO NOT SCALE	SHEET: 1 OF 1		